



Stack Air Emission Report of Generator-1:

INDESORE SWEATER LTD.



Conducted By

GREENTECH TESTING COMPANY LTD.

Corporate Office:

House: 4 Sobhanbag, Mohammadia Super
Market, Dhanmondi-27, Dhaka-1207

Contact: +8801727-310675, 01795-333332



Date of Testing: January 28, 2019

Date of Report Submitting: February 2, 2019



GREENTECH TESTING COMPANY

Environmental Testing, Inspection, Assessment, Calibration
& Consultancy Organisation.



Certificate Number: GTCL/VER/2019/212

Stack Air Emission Report

Issued By	: Greentech Testing Company Ltd. House No: 4 Sobhanbag, 123 Mohammadia Super Market (2 nd Floor), Mirpur Road, Dhaka-1207. Contact Number: 01795-333332 E-mail: ceo@gtclbangladesh.com
Date of Issue	: February 2, 2019
Certificate Number	: Certificate Number: GTCL/VER/2019/212

Customer	: INDESORE SWEATER LTD. Deger Chala, National University, Gazipur Sadar, Gazipur-1704, Bangladesh.
Description	: Stack Air Emission Assessment of Generator. (Included Parameter: 1. SPM- Suspended Particulate Matter, 2. NO _x - Oxides of Nitrogen, 3. SO _x - Sulfur Dioxide, 4. CO- Carbon Mono-oxide, 5. CO ₂ - Carbon Di-oxide, 6. O ₂ - Oxygen,)
Date of Assessment	: January 28, 2019



Prepared By:

Md. Arif Ullah
Environmental Specialist
Greentech Testing Company Ltd.(GTCL)



Approved By:

Md. Atiqur Rahman
Environmental Specialist
Head of- Quality Assurance
Greentech Testing Company Ltd.(GTCL)

Corporate office:

Shobhanbag,
123 Mohammadia Super Market
(2nd floor), Mirpur Road,
Dhaka-1207.

Web:

E-mail:
Hotline:

www.gtclbangladesh.com
ceo@gtclbangladesh.com
+8801795-333332, +8801727-310675,
+8801908-028230, +8801908-028231

Lab office:

Nilu Plaza,
256/A West Dhanmondi ,
Dhaka-1209.



GREENTECH TESTING COMPANY

Environmental Testing, Inspection, Assessment, Calibration
& Consultancy Organisation.



Certificate Number: GTCL/VER/2019/212

Stack Air Emission Report

Description of Sampling:

Name of Combustion Unit: Generator (Diesel Generator)

Key Information of Generator	Generator
Location of Generator	Ground floor, Generator Room
Capacity	660 KVA / 528 KW
Brand Name	Perkins
Supplier Name	Energy Pac
Model No.	P600-1
Serial No.	FGWCPS6KPCF00102
Frequency	50 Hz
Volts	400/230V
Manufacturer Year	2013
Origin	UK
Relevant Weather Condition	
Temperature of Generator Room	26.5°C
Humidity of Generator Room	54% RH
Ambient Weather	Normal

Sampling has been done by automatic sampler connected with the analyzer. During the sampling procedure, all instruction stated in the Greentech Testing Company Ltd. work instruction GT-101 has followed. The machine probe has set to the center point of the exhaust. Sampling has been conducted for specific time intervals mentioned in the work instruction and recorded in a field data collection sheet.

Corporate office:

4 Shobhanbag,
123 Mohammadia Super Market
(2nd floor), Mirpur Road,
Dhaka-1207.

Web:

E-mail:

Hotline:

www.gtclbangladesh.com
ceo@gtclbangladesh.com
+8801795-333332, +8801727-310675,
+8801908-028230, +8801908-028231

Lab office:

Nilu Plaza,
256/A West Dhanmondi,
Dhaka-1209.



GREENTECH TESTING COMPANY

Environmental Testing, Inspection, Assessment, Calibration
& Consultancy Organisation.



Certificate Number: GTCL/VER/2019/212

Description of Analysis

Sl. No.	Sample Description	Name of the Parameters					
		SPM	NOx	SOx	CO	CO ₂	O ₂
1	Method of Analysis	Gravimetric	EPA Method (7-1)	Hydrogen Per-Oxide	ORSAT Method	ORSAT Method	ORSAT Method
2	Emission Source from Diesel Generator Exhaust (Capacity- 660 KVA/ 528 KW)	216	174	282	423	6.2%	9.2%
3	Unit	mg/Nm ³	mg/Nm ³	mg/Nm ³	mg/Nm ³	V/v	%
4	Duration (Minutes)	30	30	30	30	30	30
5	Bangladesh (DoE) Standard	100 (Gas) 300 (Liquid)	150 (Gas) 300 (Liquid)	NYS	NYS	NYS	NYS
6	IFC / World Bank Standard	NYS	320 (Gas) 460 (Liquid)	2000	NYS	NYS	NYS
7	Remark	Excellent	Good	Good	Good	Good	Good

(Note: these above-mentioned parameters are GHG substance)

Abbreviation: - 1. SPM- Suspended Particulate Matter, 2. NOx- Oxides of Nitrogen, 3. SOx- Sulfur Dioxide, 4. CO- Carbon Mono-oxide, 5. CO₂- Carbon Di-oxide, 6. O₂- Oxygen, 7. NYF- Not Yet Set-Not Found. 8. V/v- Volume / volume, 9. DoE – Department of Environment. 10. N/A- Not Applicable.

Pollutant Quantity Calculation: Measured Emission Concentration (mg/nm³) × Measured Air Flow (nm³/H) × Operating time (Hour/Year) = Mass pollutant Discharge (Kg/Year):

Pollutant Quantity Calculation	SPM	NOx	SOx
Measured Emission Concentration (Ng/nm ³):	216	174	282
Measured Air Flow (Nm ³ /Hour):	5825		
Operating time (Hour/Year):	749.5		
Total Air Emissions Discharge Inventory (Kg/Year):	943.02	777.12	1231.17

Corporate office:

4 Shobhanbag,
123 Mohammadia Super Market
(2nd floor), Mirpur Road,
Dhaka-1207.

Web:

E-mail:

Hotline:

www.gtclbangladesh.com
ceo@gtclbangladesh.com
+8801795-333332, +8801727-310675,
+8801908-028230, +8801908-028231

Lab office:

Nilu Plaza,
256/A West Dhanmondi,
Dhaka-1209.



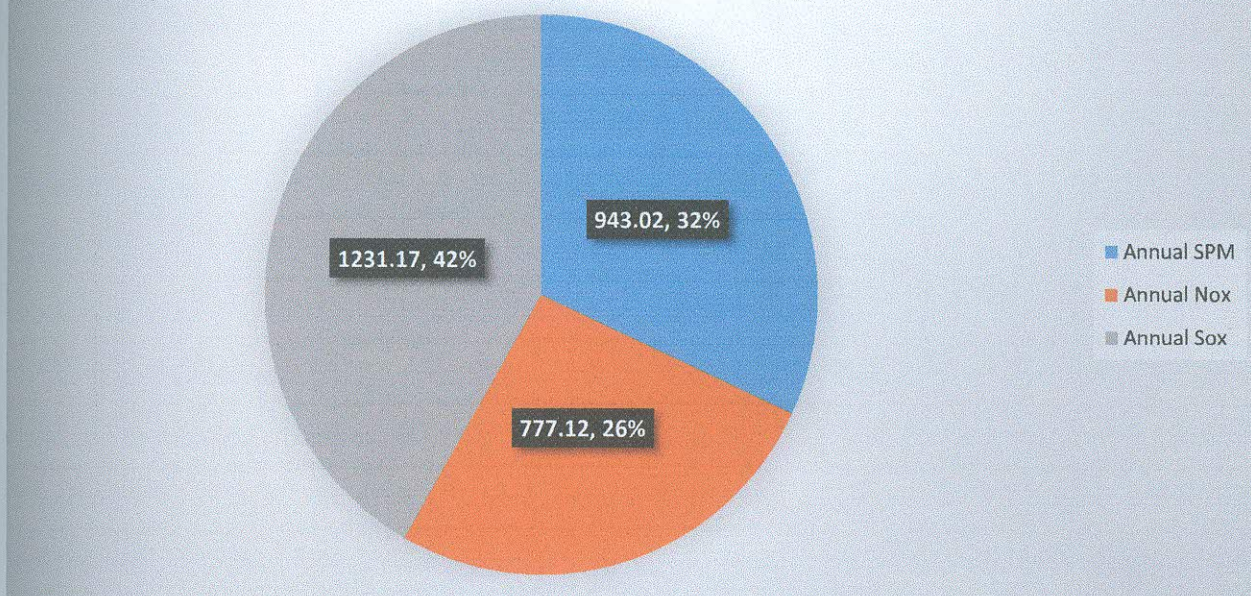
GREENTECH TESTING COMPANY

Environmental Testing, Inspection, Assessment, Calibration
& Consultancy Organisation.



Certificate Number: GTCL/VER/2019/212

Graph of Annual Generator-1 : Air Emission of Inventory



Comment: Generator of INDESORE SWEATER LTD. which is run 100% by Diesel. Stack/Point source emission from the generator has been analyzed and to evaluate SPM, NOx, SOx, CO, CO₂, & O₂ from the point source emission. It was observed that the levels of SPM, NOx, SOx, CO, CO₂, & O₂ from emission were within the standard limits as per Bangladesh and IFC / World Bank Standard. Black smoke was not found in the point sources of INDESORE SWEATER LTD.



Prepared By:

Md. Arif Ullah
Environmental Specialist
Greentech Testing Company Ltd. (GTCL)



Approved By:

Md. Atiqur Rahman
Environmental Specialist
Head of- Quality Assurance
Greentech Testing Company Ltd. (GTCL)

Corporate office:

4 Shobhanbag,
123 Mohammadia Super Market
(2nd floor), Mirpur Road,
Dhaka-1207.

Web:

E-mail:
Hotline:

www.gtclbangladesh.com
ceo@gtclbangladesh.com
+8801795-333332, +8801727-310675,
+8801908-028230, +8801908-028231

Lab office:

Nilu Plaza,
256/A West Dhanmondi ,
Dhaka-1209.



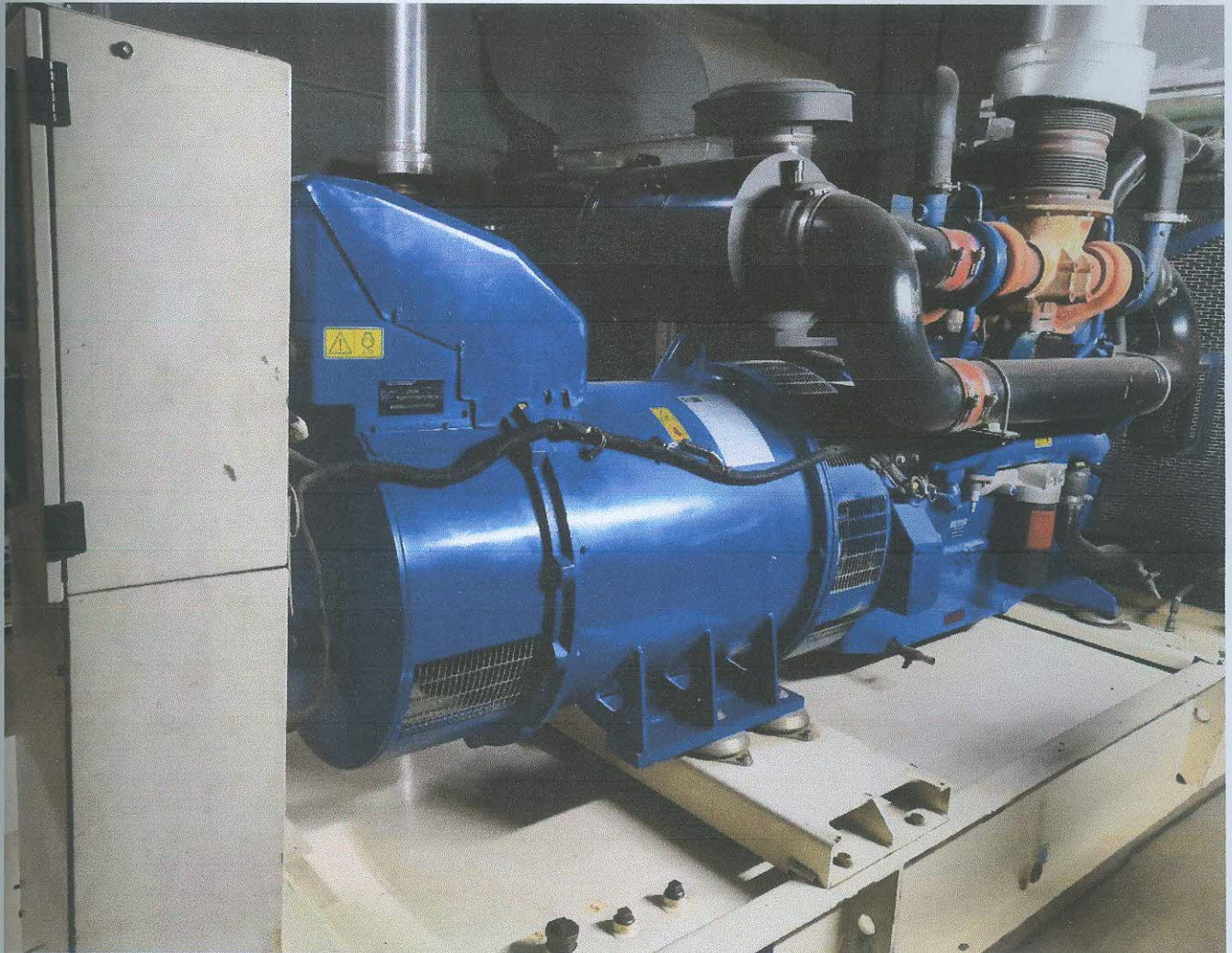
GREENTECH TESTING COMPANY

Environmental Testing, Inspection, Assessment, Calibration
& Consultancy Organisation.



Certificate Number: GTCL/VER/2019/212

Photograph of the Generator-1:



Corporate office:

4 Shobhanbag,
123 Mohammadia Super Market
(2nd floor), Mirpur Road,
Dhaka-1207.

Web:

E-mail:
Hotline:

www.gtclbangladesh.com
ceo@gtclbangladesh.com
+8801795-333332, +8801727-310675,
+8801908-028230, +8801908-028231

Lab office:

Nilu Plaza,
256/A West Dhanmondi ,
Dhaka-1209.